

P-30

WWW.P30.EE

lorup[®]
H A N D M A D E

HISTORY

Johannes Lorup
(second from right)



JOH. LORUPI KLAASIVABRIK
Tallinn

Kontor: Vasa 1, Kõnebr. 442-01 ja 459-01
Vabrik: Tallinn-Kaali Bakkari 44, nr 84, Kõnebr. 499-49 77

HINNAKIRI.

See ja lähend
POOLKRISTALL
&
**harilikust klaasist puhutud ja
pressitud kaubad**

Jaanuar 1936.

The Story of Lorup

Scancrystal is today the only hand-made glass manufacturer in Estonia. Approximately 70% of the production is exported, primarily to European markets, with the most important markets being Scandinavia, the Netherlands and Great Britain.

Glass manufacturing in Estonia dates back to 1796, the year that a glass factory in Meleski in Viljandi County was founded. The production at that time consisted of mirror glass, bottles, stemware and jugs. Export was mainly to neighbouring countries such as Russia and Sweden but even to other parts of Europe and the Americas.



In 1924, the Meleski factory was taken over by a man named Johannes Lorup. Having been educated in Czechoslovakia and Germany, he returned to Estonia with his new knowledge in the field of glass making and set about modernizing the factory's assortment. In 1934, as the new assortment gained popularity on several export markets, the original facilities started becoming insufficient for further expansion. The production was then moved to the present location in Tallinn, the capital of Estonia.

By the onset of World War II, as a result of Soviet economic policy, Estonian industry underwent extensive nationalization, whereby also the Lorup factory was nationalized. Johannes Lorup was deported to Siberia from where he never returned.

After Estonia regained independence in the early 1990's, the company was re-privatised and named Scancrystal. Estonian and Swedish interests refurbished the factory with modern melting and manufacturing equipment, incorporating contemporary Swedish glass technology. Skilled glass blowers were retrained, and the production facilities reorganised to produce high quality glass designs for western markets.

In keeping with our heritage, the name Lorup has of 2001 been reinstated as the trademark for our assortment. As the leading Estonian glass manufacturer, our collection today reflects a combination of old Estonian handicraft skills and modern glassblowing technique. Our ambition is to produce beautiful and functional glass items with quality and a modern Nordic design.



**Kai Kiudsoo-Värv**

Born in 1968 in Tallinn, graduated from the Estonian State Art Institute. She has participated in exhibits in Estonia, Denmark and Japan: *Dialogue*, in Denmark 2000; *Young glass 1997*, in Denmark; *Viida*, in Estonia 1997; *Estonian Glass 60*, in Tallinn 1997; *International Exhibition of Student Works*, in Nagoya, Japan 1994; *Stained Glass*, Estonia 1994.

Merle Lobjakas

Born in 1978 in Estonia, graduated from the Tartu School of Art, at present studying at the Estonian Art Academy. She has participated in student exhibitions and specialised workshops in Estonia and Denmark.

**Eino Mäelt**

Born in 1940 in Estonia, graduated from the Estonian State Art Institute. He has participated in exhibits in several countries. Some of his solo exhibits: in Estonian National Library, Tallinn 1995; the Sammas Gallery, Tallinn 1994; Gallery *PAINEN*, Berlin 1993; Gallery *LINNE*, Sweden 1992; Castle of Kuressaare, Estonia 1991; Finnish Glass Museum, Riihimäki, Finland 1989. In 1984 he received the Annual Applied Art Award of the Estonian Artists' Union.

Tiina Sarapu

Born in 1971 in Estonia, graduated from the Estonian Academy of Arts. She has participated in several exhibits in Estonia and Denmark, the latest being *Nordic Glass 2000*, in Copenhagen, Denmark; *Belong Together*, in Tallinn 1998 and 1999 and a solo exhibit *Fall-Fly* in Slagelse, Denmark in 1999. In 1997 she received the Jutta Cury-Franz Memorial Award in Düsseldorf, Germany.

**Tiia Lena Vilde**

Born in 1944 in Estonia, graduated from the Estonian State Art Institute. Tiia Lena Vilde has been working with the company for around 30 years being a guarantee for continuity of design. Some of her exhibits: *The Tarbeklaas Designers*, in Tallinn 1993; *Estonian Glass*, in Estonia 1975, 1982, 1983, 1989; solo exhibits: Local History Museum in Rakvere, Estonia 1987, 1982. In 1975 she received the Bronze Medal of the all-Union Exhibition of Achievements of National Economy, Moscow. In 1981 she received the prize of the all-Union Competition of Industrial Design, Moscow.

Rachael Woodman

Rachael Woodman was born in Watford, England in 1957. She has studied at the Orrefors Glass School as well as the Royal College of Art in London. She has participated in several exhibitions in USA and Europe, among the latest being Contemporary Decorative Arts in Sotheby's in London and Meister der Moderne in Munich. She is permanently represented at the Victoria and Albert Museum in London and the Corning Glass Museum in New York.





P-30

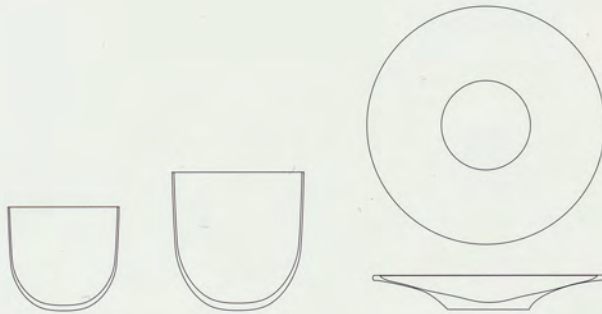
WWW.P30.EE

I want the glass designs I create to be part of beauty in people's lives. I want my art to express positive creative power. I like to play around with my ideas like a skillful master plays with hot glass in order to make it become an ideal reality.

Merle Lobjakas

lorup®

Design: Kai Kiudsoo-Värv



ELIZABETH

Bowl

Ø 160 mm, h 160 mm

green	45589
red	45588
white	45587

Ø 210 mm, h 210 mm

green	45579
red	45578
white	45577

Plate

Ø 320 mm

green	45599
red	45598
white	45597



ROBIN

Jug
32 cl

- blue14015
- white, blue handle14014
- yellow, blue handle14028

60 cl

- blue14006
- white, blue handle14013
- yellow, blue handle14027

Candleholder
h 190 mm

- green, blue stem45258
- red, blue stem45294
- yellow, blue stem45292

h 250 mm

- green, blue stem45263
- red, blue stem45267
- yellow, blue stem45266

TOMORROW

P-30

WWW.P30.EE

Design: Tiina Sarapu



TOMORROW

Vase
h 220 mm

- clear45430
- green45440
- blue45450

Design: Merle Lobjakas



ONCE

Vase
h 350 mm

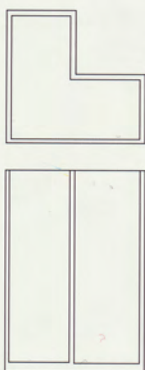
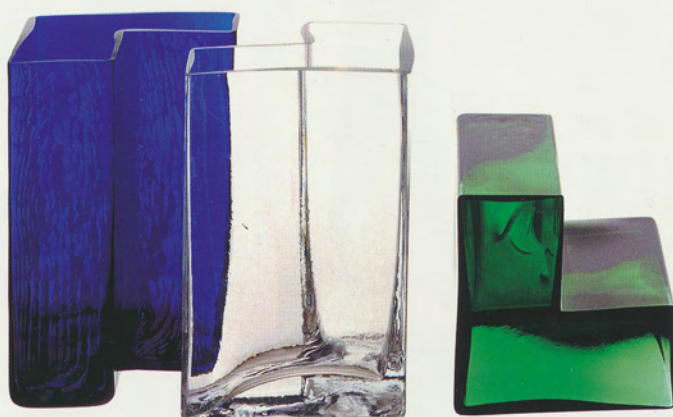
- clear45460
- green45461
- blue45462

CORNER

Design: Eino Mäelt

P-30

WWW.P30.EE



CORNER

Vase
h 195 mm

- clear25110
- green25111
- blue25112



SQUARE JUG

Small jug
30 cl, h 130 mm

clear11730
green11731
blue11732

Medium jug
80 cl, h 170 mm

clear11740
green11741
blue11742

Large jug
100 cl, h 215 mm

clear11760
green11761
blue11762

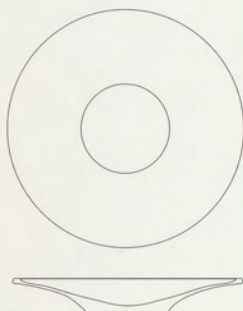
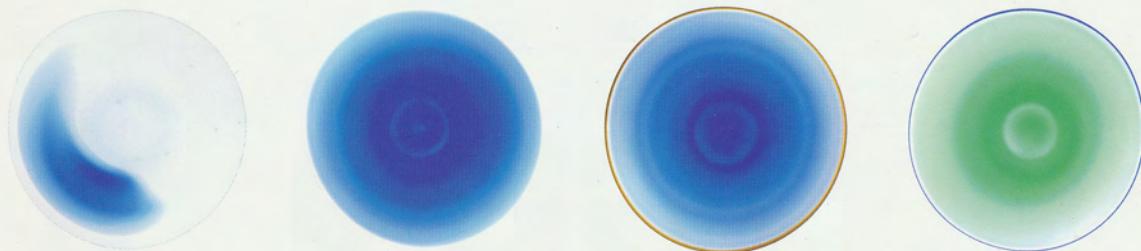
P-30

WWW.P30.EE

Glass is a material of intriguing nature. The outcome is almost always surprising, no matter how thoroughly you have sketched it on the paper or envisaged it in your mind. And in most cases the surprise is a pleasant one. **Kai Kiudsoo-Värv**

lorup®

Design: Tiia Lena Vilde

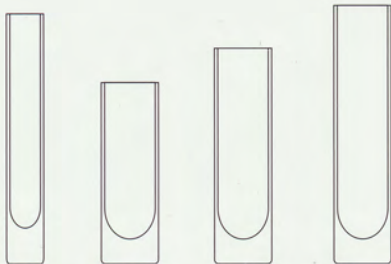


PLATES

Plate
Ø 370 mm

- green, blue edge12086
- blue12078
- blue, green edge12074
- blue, red edge12079
- light and dark blue65061

Design: Tiia Lena Vilde



LONELY VASE | CYLINDER VASE

Lonely Vase
Ø 43 mm, h 280 mm

- clear11515
- green.....11516
- blue11517
- smoke11529
- clear, frosted.....11518
- green, frosted11519
- blue, frosted11525
- smoke, frosted11537

Cylinder vase
Ø 64 mm, h 200 mm

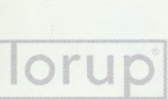
- clear11270
- green11300
- blue11332
- smoke11260
- clear, frosted.....11274
- green, frosted11304
- blue, frosted11334
- smoke, frosted11264

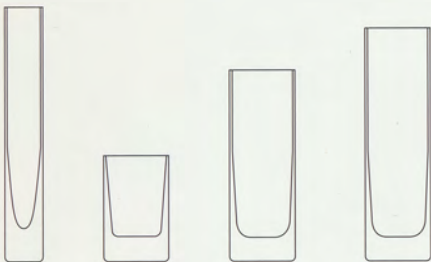
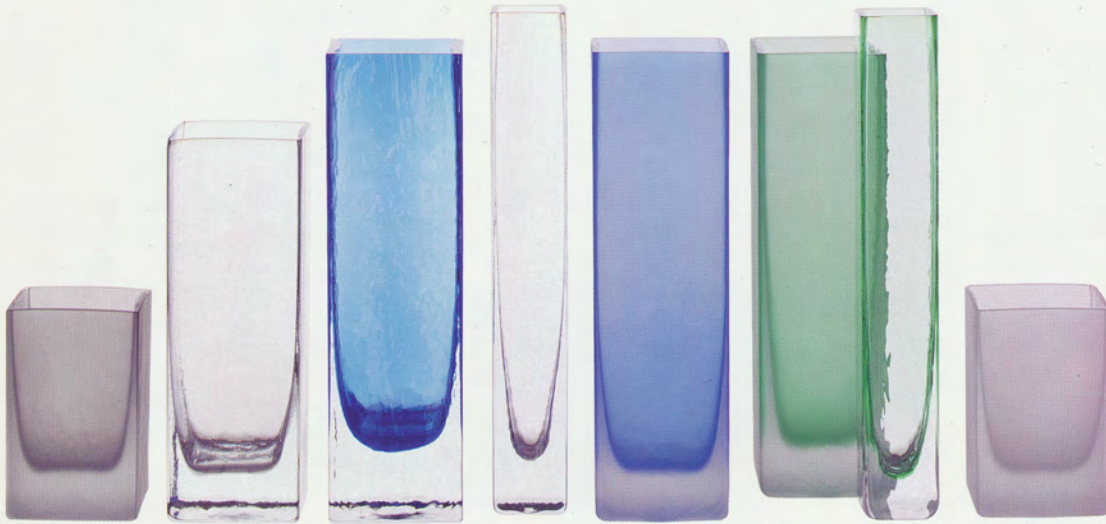
Cylinder vase
Ø 64 mm, h 240 mm

- clear11280
- green11311
- blue11342
- smoke11310
- clear, frosted.....11284
- green, frosted11314
- blue, frosted11344
- smoke, frosted11316

Cylinder vase
Ø 64 mm, h 280 mm

- clear11290
- green11321
- blue11352
- smoke11320
- clear, frosted.....11294
- green, frosted11324
- blue, frosted11354
- smoke, frosted11326





STRAIGHT | SQUARE VASES

Straight vase
Ø 40 mm, h 265 mm

clear	11524
light green	11670
light blue	11680
smoke	11690
clear, frosted	11534
light green, frosted	11676
light blue, frosted	11686
smoke, frosted	11696

Square vase
Ø 68 mm, h 110 mm

clear	11370
light green	11850
light blue	11860
light smoke	11870
clear, frosted	11374
light green, frosted	11854
light blue, frosted	11864
light smoke, frosted	11874

Square vase
Ø 68 mm, h 200 mm

clear	11400
light green	11880
light blue	11890
light smoke	11970
clear, frosted	11404
light green, frosted	11884
light blue, frosted	11894
light smoke, frosted	11974

Square vase
Ø 68 mm, h 265 mm

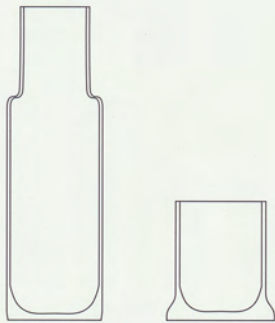
clear	12520
light green	11980
light blue	12530
light smoke	12540
clear, frosted	12524
light green, frosted	11984
light blue, frosted	12534
light smoke, frosted	12544

SPEAKER

P-30

WWW.P30.EE

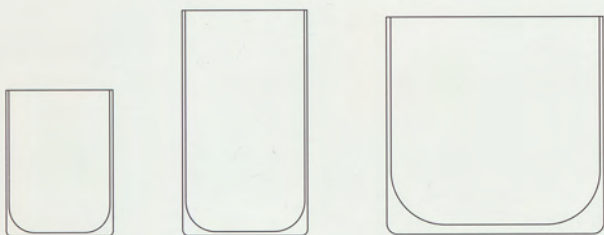
Design: Tiia Lena Vilde



SPEAKER

Carafe with glass
55 cl, h 250 mm

clear	45200
light blue	45202



JARS

Jar		
Ø 110 mm, h 130 mm	clear	21050
	blue	21052
Ø 210 mm, h 120 mm	clear	21040
	blue.....	21042
Ø 200 mm, h 200 mm	clear	44040
	blue	44042

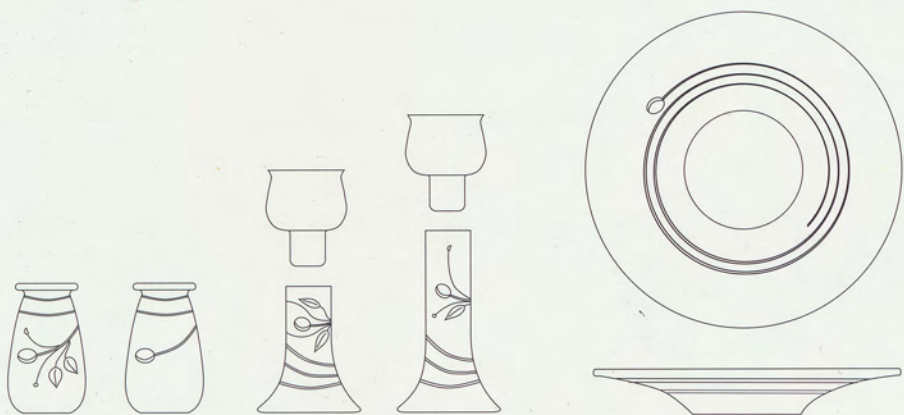
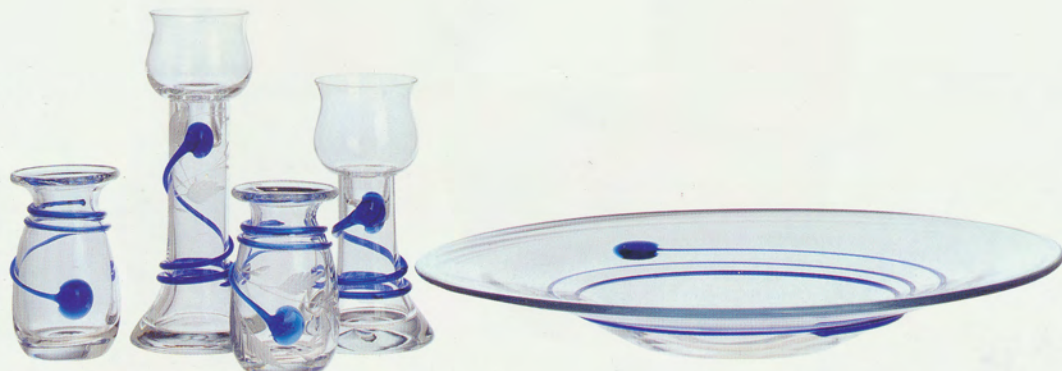


P-30

WWW.P30.EE

Estonia has a solid history and tradition in the field of glassblowing and I feel a need to contribute to this continuity. I feel that it is imperative that the product meets the requirements of modern users and their understanding of glass design in a broader context. **Eino Mäelt**

lorup®



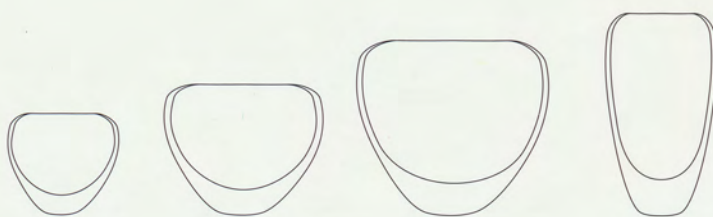
BLUE VEIN

Vase	
h 116 mm	clear12140
	engraved12143
Candleholder	
h 157 mm	small12310
	small, engraved12313
h 204 mm	large12300
	large, engraved12303
Plate	
Ø 370 mm12070

STRAWBERRY**P-30**

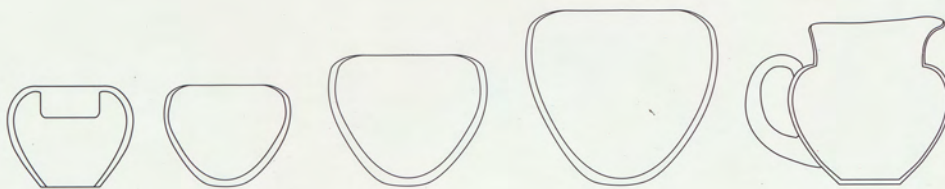
WWW.P30.EE

Design: Tiia Lena Vilde

**STRAWBERRY**

Bowl	
h 97 mm62028
h 128 mm62029
h 175 mm62030

Vase	
h 210 mm62130



APPLE

Candelholder
h 95 mm

green15093
red15095
red / yellow15094

Bowl
h 97 mm
h 128 mm
h 175 mm

red / yellow62025
red / yellow62018
red / yellow62024

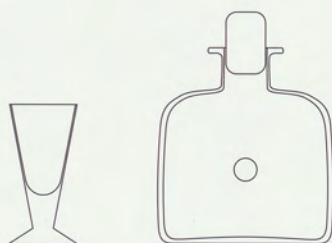
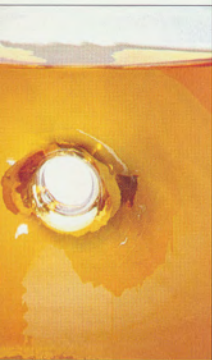
Jug
140 cl, h 170 mm

green62042
red62032
red / yellow62033

GOLDEN EYE

WWW.P30.EE

Design: Tiia Lena Vilde



GOLDEN EYE

Snaps glass
4 cl

clear	11951
green	11956
blue	11957
clear, green base	11959
clear, blue base	11958
clear, smoke base	11905
clear frosted	11969
green frosted	11966
blue frosted	11965
clear, green base, frosted	11964
clear, blue base, frosted	11967
clear, smoke base, frosted	11968

Giftbox: bottle and 2 snaps glasses11952



SOPHIA

Snaps glass 4 cl	clear.....	11010	Liquer glass 7 cl	clear	11030	
	green	11011		green base	11041	
	blue	11012		blue base	11042	
	clear frosted.....	11014		smoke base	11045	
	green frosted	11008	White wine glass 20 cl	clear	21070	
	blue frosted	11028		green base	21171	
	clear, green base.....	11021		blue base	21172	
	clear, blue base	11022		smoke base	21175	
	clear, smoke base	11005		Red wine glass 24 cl	clear.....	21080
	green, blue base	11020			green base.....	21181
	red, blue base	11019	blue base		21182	
	yellow, blue base.....	11029	smoke base		21185	
	clear, green base, frosted	11004	Champagne glass 22 cl	clear.....	11050	
	clear, blue base, frosted	11024		green base.....	11061	
clear, smoke base, frosted	11006	blue base		11062		
clear, smoke base, frosted	11006		smoke base	11055		
Giftbox: bottle and 4 snaps glasses	11758					



P-30

WWW.P30.FI

lorup®

As a transparent material, glass in my work signifies a connection between the visible and invisible, real and unreal worlds, a bridge from today to inaccessible tomorrow. **Tiina Sarapu**



VOICE

Snaps glass
7 cl, h 85 mm

- clear45070
- green45071
- blue45072
- smoke45074

Whiskey glass
20 cl, h 87 mm

- clear45080
- green45081
- blue45082
- smoke45084

HB glass
25 cl, h 135 mm

- clear45090
- green45091
- blue45092
- smoke45094

Design: Tiia Lena Vilde



SPRING TIME

Snaps glass
12 cl

clear40030
green base40031
blue base40032
smoke base40038

White wine glass
25 cl

clear40040
green base40041
blue base40042
smoke base40039

Red wine glass
35 cl

clear40050
green base40051
blue base40052
smoke base40058



WHITE LADY

White wine glass
10 cl

clear 41020
engraved41120
green base41021
blue base41022
smoke base41025

Red wine glass
20 cl

clear41010
engraved41110
green base41011
blue base41012
smoke base41015

Water glass
30 cl

clear41030
engraved41130
green base41031
blue base41032
smoke base41036

Martini glass
15 cl

clear41040
engraved41140
green base41041
blue base41042
smoke base41045

Design: Tiia Lena Vilde

**AQUARIUS**

Snaps glass 6 cl, h 70 mm	clear, frosted	45004
Whiskey glass 17 cl, h 85 mm	clear, frosted	45014
HB glass 38 cl, h 175 mm	clear, frosted	45024

P-30

WWW.P30.EE



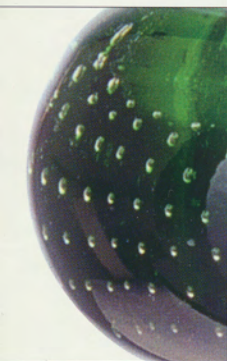
lorup®

WATERDROP

P-30

WWW.P30.EE

Design: Tiia Lena Vilde



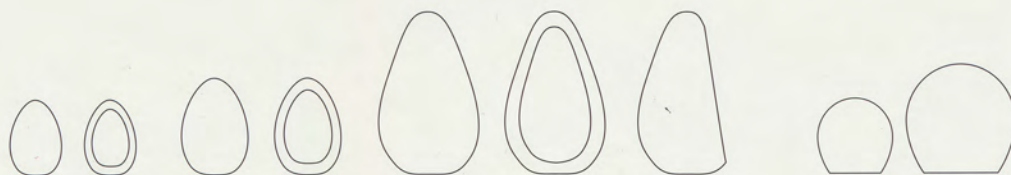
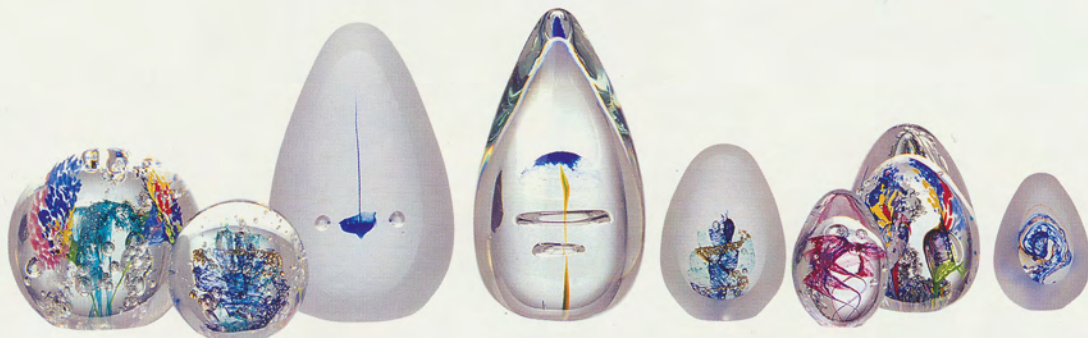
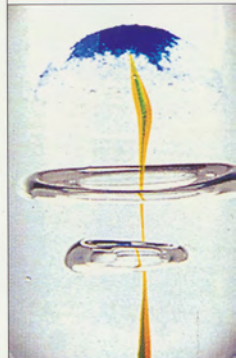
WATERDROP

Candlestick
Ø 80 mm

- clear11580
- green11581
- blue11582

Tealight
Ø 100 mm

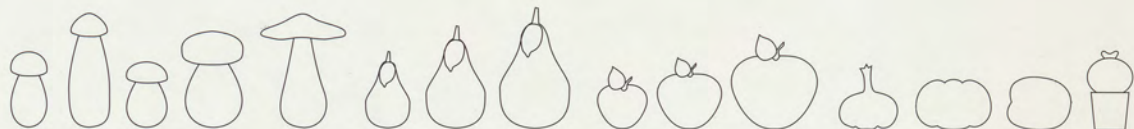
- clear11590
- green11591
- blue11592



PAPER WEIGHTS

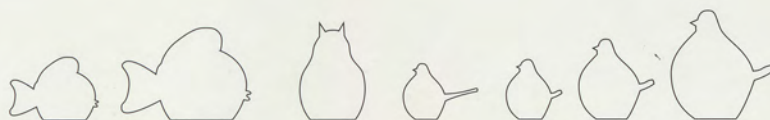
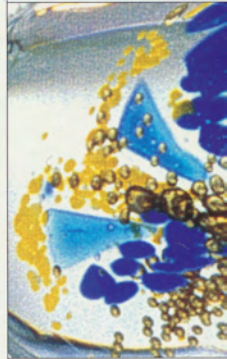
Paper weight	
h 65 mm	small65074 small, polished65083
h 80 mm	medium15110 medium, polished15111
h 140 mm	large65080 large, polished65085
Rounded paper weight	
h 80 mm	small15120
h 85 mm	large15121

Design: Tiia Lena Vilde



FLORA

Mushroom No 1		Apple	
h 90 mm15007	h 75 mm	small green15048
h 130 mm15006		red15049
Mushroom No 2			red / yellow15047
h 80 mm15009	h 95 mm	medium green15031
h 110 mm15008		red15033
Fly agaric15058		red / yellow15037
		h 120 mm	large green15028
Pear			red15029
h 65 mm	small green15088	h 75 mm	red / yellow15027
	red15089		bubbled clear15040
	red / yellow15087		green15041
h 130 mm	medium green15098		blue15042
	red15099	Garlic	h 70 mm15025
	red / yellow15097	Tomato	h 50 mm15057
h 100 mm	large green15109	Paprika	h 110 mm green15167
	red15108		red15077
	red / yellow15107	Cactus	h 100 mm clear base15068
			brown base15010



FAUNA

Fish		Nordic bird	
h 60 mm15005	h 50 mm	green15532
h 95 mm15052		blue15520
			red15534
Owl			yellow15535
h 80 mm15059		
		h 65 mm	green15537
Bird			blue15521
h 50 mm	green15506		red15539
	blue15503		yellow15540
	red15508		
	yellow15504	h 90 mm	green15542
			blue15522
			red15544
			yellow15545
			yellow15504

P-30

WWW.P30.EE



lorup

P-30

WWW.P30.EE



P-30

WWW.P30.EE

Scancrystal Ltd

Marati 12, 11712 Tallinn, Estonia; tel +372 661 7090, fax +372 661 7091; info@scancrystal.com; www.scancrystal.com

Lorup® is a registered trademark of Scancrystal Ltd.